

# COMPUTER SUPPLY & SUPPORT

Support Guidelines - First Level

## How to support SPIN (V5.0) Student Plug-In Network Setup for Macintosh OSX



THE UNIVERSITY OF  
MELBOURNE

Version 5

October 2003

<b>1</b>	<b><u><a href="#">SPIN Introduction</a></u></b> .....	<b>2</b>
1.1	<u><a href="#">What is SPIN?</a></u> .....	2
1.2	<u><a href="#">Who can access SPIN?</a></u> .....	2
1.3	<u><a href="#">What does it provide?</a></u> .....	2
1.4	<u><a href="#">Network Restrictions</a></u> .....	2
1.5	<u><a href="#">Is it secure?</a></u> .....	3
1.6	<u><a href="#">Hardware/Software Requirements</a></u> .....	3
1.7	<u><a href="#">Where can I find SPIN?</a></u> .....	3
<b>2</b>	<b><u><a href="#">SPIN Settings – Brief Overview</a></u></b> .....	<b>4</b>
2.1	<u><a href="#">Network Setup</a></u> .....	4
2.2	<u><a href="#">Web Browser Set-up</a></u> .....	4
2.3	<u><a href="#">E-mail Setup</a></u> .....	4
<b>3</b>	<b><u><a href="#">SPIN Settings – Detailed</a></u></b> .....	<b>5</b>
3.1	<u><a href="#">Configure MACOS X to access the Network</a></u> .....	5
<b>4</b>	<b><u><a href="#">Configuring Proxy settings for Internet Explorer</a></u></b> .....	<b>6</b>
<b>5</b>	<b><u><a href="#">Troubleshooting</a></u></b> .....	<b>6</b>

# 1 SPIN Introduction

This document is a guide for laptop owners who wish to connect to the University Network via the Ethernet outlets provided at The University of Melbourne.

## 1.1 What is SPIN?

SPIN is a collection of network access points through which student laptop computers can be connected to the University network.

The useful access points are Cat 5 Ethernet sockets. There are also a number of serial sockets of the same physical form. These provide connection via a special cable to a laptop serial port and use PPP technique. These are becoming obsolete and it is intended that they will be converted to Ethernet outlets.

Note that the Legal Resource Centre only provides Cat 5 Ethernet sockets.

## 1.2 Who can access SPIN?

This service is only available to current staff and students who have set up a University e-mail account. If you have not already set up your e-mail account, please visit the following website to create one:

<http://accounts.unimelb.edu.au>

## 1.3 What does it provide?

Once connected to the SPIN outlet you get:

<ul style="list-style-type: none"><li>• <b>TCP/IP</b> connectivity to the University Network.</li></ul>	You can send and receive data to and from servers and other computers throughout the University.
<ul style="list-style-type: none"><li>• <b>HTTP</b> (web) access to servers outside the University via a student proxy.</li></ul>	Access to the student proxy is authenticated by entering your University e-mail username and password when requested.

**Note:** To access websites external to the University you must a University email account. To create an email account refer to: <http://accounts.unimelb.edu.au>. A Student Card is required to complete the process.

## 1.4 Network Restrictions

- The student proxy does not impose restrictions on what websites you are allowed to access.
- There are no download limits for access to University servers and websites.
- The download limits for data traffic outside of the University are 50MB for undergraduate students and 175MB for postgraduate students.
- There is no limitation on the type of connection used to connect within the University. However, some servers in the University will not accept connections from SPIN such as the University's administrative systems Merlin, Genesys and MUFAS.

- It is possible to access external web-based email services like Hotmail through SPIN because the network protocol used is HTTP. It is not possible to access external services which use other protocols such as POP for email.
- In order to provide a secure environment for our network, you may find that particular internet software such as MSN Messenger may not work due to port blocking.

### **1.5 Is it secure?**

While connected to SPIN, your laptop is still vulnerable to security breaches and virus attacks which may lead to loss of data. The University is not responsible for such loss and highly recommends that you install an appropriate firewall and virus scanner to avoid this.

The University of Melbourne currently has a site licence for McAfee VirusScan which can be downloaded from <ftp://ftp.unimelb.edu.au/unimelb-only/anti-virus>. The software is available to staff and students of the University only and should not be redistributed.

### **1.6 Hardware/Software Requirements**

Your laptop must meet the following minimum requirements:

- Apple Macintosh laptop i.e. Titanium, iBook or PowerBook G3 running OSX
- UTP drop cable
- Internet Explorer or Netscape Navigator as the web browser
- A current University email account

### **1.7 Where can I find SPIN?**

The SPIN network is not restricted to the Legal Resource Centre. The Information Division provides several other SPIN outlets located at:

- **Giblin Library**
  - Level 2 – East corrals (Ethernet) 17 outlets
  - Level 3 – Central corral (Ethernet) 10 outlets
  - Level 3 – South corral (Ethernet) 16 outlets
- **Ballieu Library**
  - Level 2 – South corrals (orientated north south) (Ethernet) 9 outlets
  - Level 3 – North corrals (Ethernet) 49 outlets
  - Level 2 – South corrals (orientated east west) (serial) 16 outlets
  - Level 3 – North corrals (first 1.5 rows) (serial) 16 outlets

## **2 SPIN Settings – Brief Overview**

The following is a brief overview of the SPIN configuration and is intended for advanced network users. If you are unfamiliar with computer networks, refer to **Section 3 SPIN Settings – Detailed**.

### **2.1 Network Setup**

The setup of SPIN takes advantage of the DHCP method, which is used to dynamically assign IP addresses to a network of computers. The subnet mask and router address is added automatically.

### **2.2 Web Browser Set-up**

If available, use the **Automatic Proxy Configuration** utility. The configuration location (URL) is **<http://www.unimelb.edu.au/cgi-bin/proxy.pac>**.

This setting will work in the Legal Resource Centre using either the outlets provided or the wireless network. It will also work in the Percy Baxter Collaborative Learning Centre and on the University dial-in service.

Staff and students who dial-in from home using a commercial Internet Service Provider (ISP) must change the configuration URL to **<http://www.unimelb.edu.au/cgi-bin/ibproxy.pac>**.

If automatic proxy configuration is not available, the web proxy address to use is **[wwwproxy.student.unimelb.edu.au](http://wwwproxy.student.unimelb.edu.au)** and the port number is 8000. Configure the browser to not use the proxy for **[unimelb.edu.au](http://unimelb.edu.au)** and **[mu.oz.au](http://mu.oz.au)**.

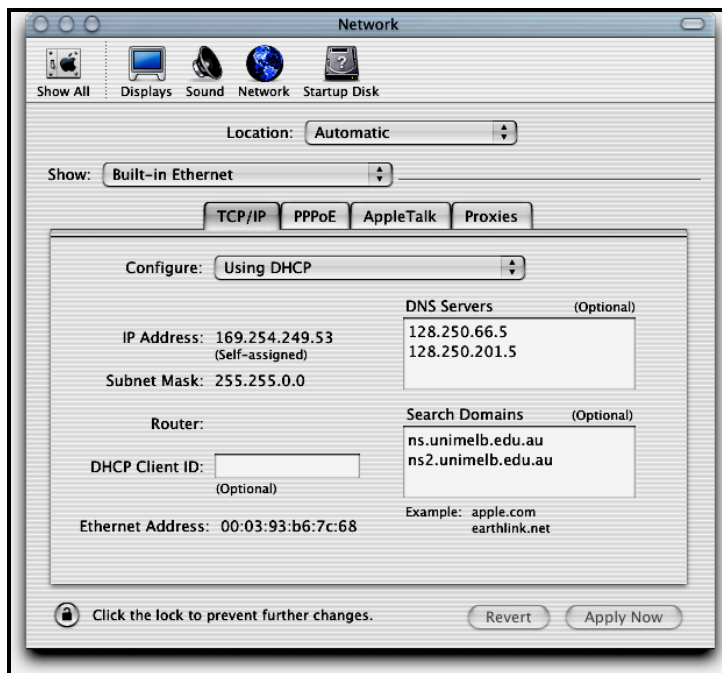
### **2.3 E-mail Setup**

You will NOT be able to access POP servers outside the University via SPIN. You can only access the University's staff and student POP servers. In Eudora (Settings, Getting Started), the setup is the same as for use anywhere within the University network or on the University dial-in. Those who use commercial ISPs to access University POP servers will have to set the SMTP server to be their ISP's SMTP server. On SPIN, the SMTP server setup should be left blank.

### 3 SPIN Settings – Detailed

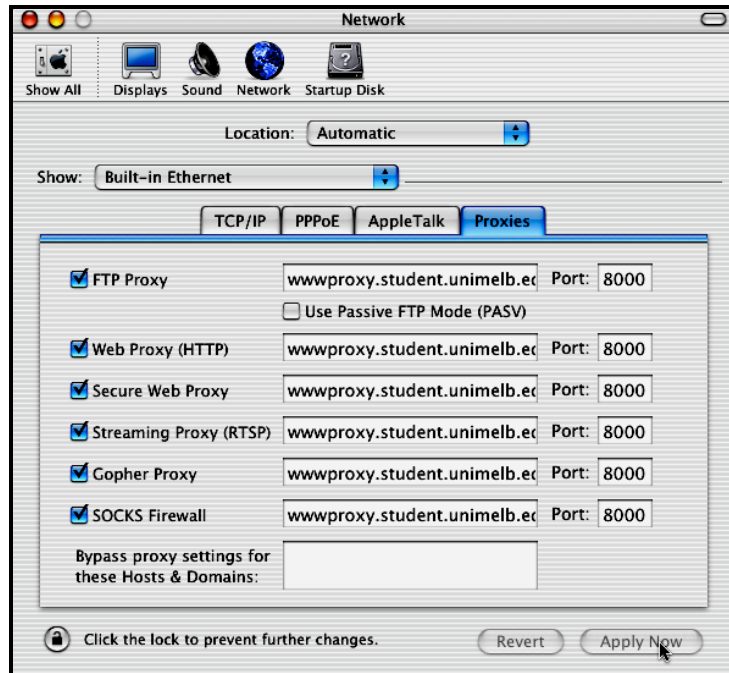
#### 3.1 Configure MACOS X to access the Network

1. Click on the **System Preferences** in the **Dock**
2. Click on **Network** to reveal that pane.
3. Go to **Show** and select **Built-in Ethernet**
4. Click on the **TCP/IP** tab and select **Configure Using DHCP**
5. In **DNS Servers** type in **128.250.66.5** and **128.250.201.5**
6. In **Search Domains** type in **ns.unimelb.edu.au** and **ns2.unimelb.edu.au**



## 4 Configuring Proxy settings for Internet Explorer

1. Click on the **Proxies** tab
2. Place a tick in every option to activate that option and type in the student proxy server address **wwwproxy.student.unimelb.edu.au** and the port number **8000** as follows:



You should now be able to browse the Internet using your SPIN connection. You will need to enter your central email username and password when prompted by the proxy server.

---

## 5 Troubleshooting

If you are unable to send mail from Eudora or the Apple Mail client then check your **SMTP** setting. It should be **smtp.unimelb.edu.au**, which is different from the setting if you are using a commercial ISP.

If you cannot access web pages outside the University (but can access pages within the University) check that your proxy settings are correct.