

COMPUTER SUPPLY & SUPPORT

Support Guidelines - First Level

How to Configure Internet Explorer (Windows 98 & 2000)



THE UNIVERSITY OF
MELBOURNE

Version 1

June 2002

1 Configure Internet Explorer to Unimelb Home Page

1.1 Introduction	1
1.2 Find Internet Options	1
1.3 Change Internet Properties	2
1.3.1 General Tab	2
1.3.2 Connections Tab	2
1.3.3 University of Melbourne PPP Settings	3
1.3.4 Proxy Settings	3
1.3.5 Complete the configuration	4
1.4 Test Internet Explorer	4

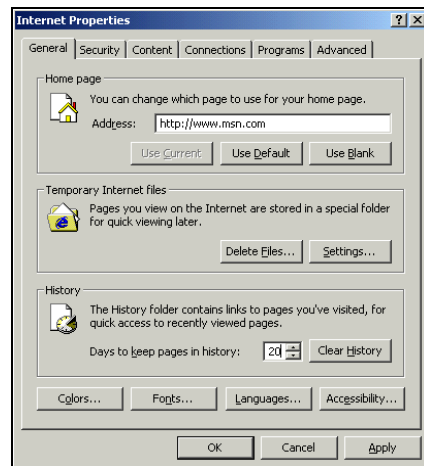
1.1 Introduction

The following instructions will set up your computer so that whenever you log into the Internet, the University of Melbourne Home Page will display.

1.2 Find Internet Options

1. On the **Taskbar**, click on the **Start** button.
2. Move the cursor up to **Settings** and across to **Control Panel**.
Click on **Control Panel**.

3. Double click on **Internet Options** to display the **Internet Properties** screen.

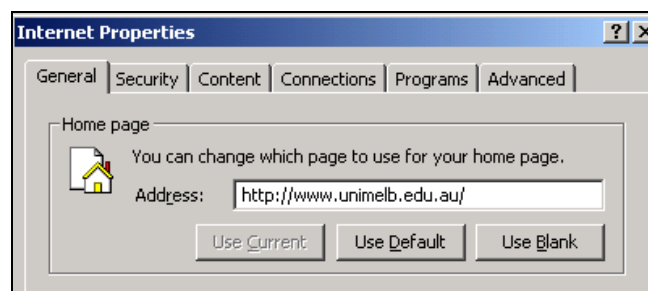


1.3 Change Internet Properties

1.3.1 General Tab

1. Check that the **General** Tab is displayed
2. Under **Home Page** check the **Address** field and type the following:

http://www.unimelb.edu.au/

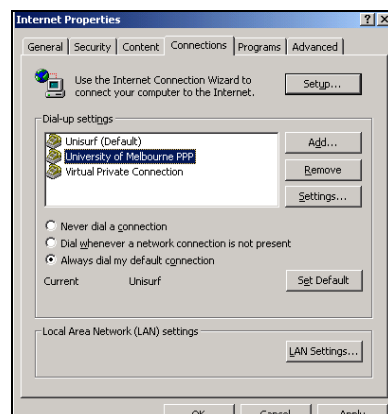


1.3.2 Connections Tab

1. Click on the **Connections** Tab to display the screen showing the Dial-up settings.

There may be several **Dial-up settings** listed depending on how many internet service provider connections are installed on your computer.

2. Click once to highlight **University of Melbourne PPP**.

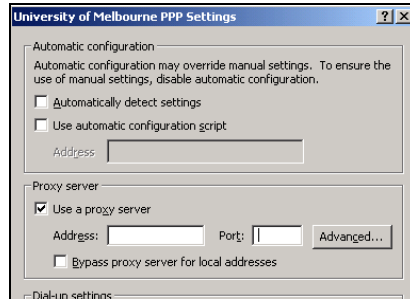


3. Click the **Settings** button (**do not** click LAN Settings).

The **University of Melbourne PPP Settings** screen displays.

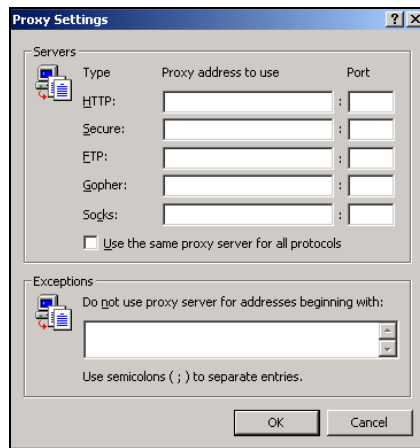
1.3.3 University of Melbourne PPP Settings

1. Under **Proxy Server**, click to place a tick in the box **Use Proxy Server**.



2. Click the **Advanced** button.

The **Proxy Settings** screen displays:

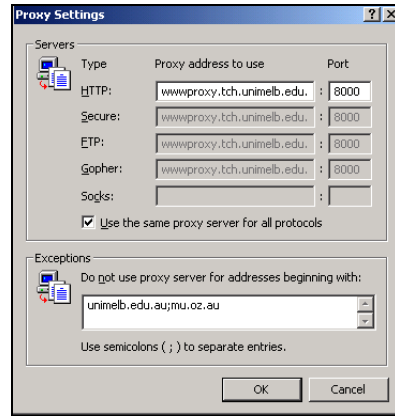


1.3.4 Proxy Settings

1. Under **Proxy Settings Server** complete the following fields:

	<i>Proxy address to Use</i>	<i>Port No.</i>
HTTP	Type: wwwproxy.tch.unimelb.edu.au	Type: 8000

2. Click to place a tick in the box **Use the same proxy server for all protocols**.



3. In the **Exceptions** field, type **unimelb.edu.au;mu.oz.au**
4. Click **OK** and click **OK** again.
5. Click on the **General** Tab.

1.3.5 Complete the configuration

1. On the **General** Tab, click the **Apply** button.
2. Click **OK**.

1.4 Test Internet Explorer



1. On the **Desktop**, double click on the **Explorer** icon
2. On the **Microsoft Internet Explorer** screen, access the university web pages and navigate around various screens.
Go online and test external websites, for example, in the **Address** field, type www.theage.com.au and press **Enter**.